

*Journey 500 years  
back in Time at  
Thimlich Ohinga*



How was this carved stone used by the residents of Thimlich Ohinga?

Thimlich Ohinga is one of the most unique heritage sites in West Kenya. Situated in Nyanza Province 181 km south of Kisumu in Migori district, the site boasts a complex of impressive stone enclosures and mysterious stone features.



National Museums  
of Kenya

1910-2010  
*Celebrating a Century of  
Heritage Management*

**Museum Hill  
P.O. Box 40658  
Nairobi  
Kenya**

**<http://www.museums.or.ke>  
+254(0)20 3741424  
[publicrelations@museums.or.ke](mailto:publicrelations@museums.or.ke)**

The vision of NMK is to be a global leader in heritage management.

**Thimlich Ohinga**

**Preserving 500 Years  
of Living Culture**



*National Museums of  
Kenya:  
Where Heritage Lives  
On*

## Thimlich: “Frightening Dense Forest” Ohinga: “high walls that are impossible to climb”



Gate and wall complex at Thimlich Ohinga. Photo courtesy of Edward Luby.

### Thimlich Ohinga is a living monument

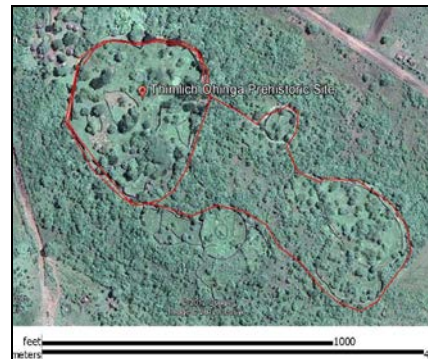
The stone enclosures at Thimlich Ohinga are alive with the local community. Stonemasons who know traditional building methods are working to conserve the walls. Neighbors of the site gather at the parking lot to sell handicrafts and interact with visitors.

### Which path will you choose?

Travelers can choose from two ways to see the Ohingi. One may choose to see only the largest Ohinga and walk a path of 1/3 mile. A longer path (roughly 3/4 mile) leads around the entire complex

### Under the Night Sky

Several Bandas are available for visitors who want to stay the night. Enjoy Thimlich Ohinga under a blanket of stars while shadows of the ancestors dance freely through the walls.



### Why is preservation of Thimlich Ohinga important?

Thimlich Ohinga is part of our shared human legacy. Preservation of cultural monuments such as Thimlich Ohinga instills a great sense of National pride in Kenyans. International tourists can marvel in the shared global heritage that is monument stone architecture.

How do Thimlich Ohinga and other global heritage sites inspire you?